

Analyzing SQL Server Data using PowerPivot in MS Excel

Wylie Blanchard
IT Consultant; Database Technology

About Great Tech Pros

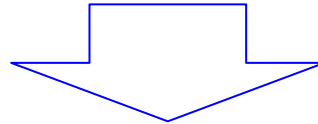
- Great Tech Pros was founded in 2012
- Specialties include:
 - IT Consulting
 - Database Administration, Management
 - Data Analysis
 - Website Design and Development
 - Professional Training and Presentations
- Visit us at www.GreatTechPros.com

Speaker:



Wylie Blanchard

- SQL Server Database Consultant
- MCSE: SQL Server Data Platform
- MCSE: Data Management and Analytics
- Website: WylieBlanchard.com
- LinkedIn: [in/WylieBlanchard](https://www.linkedin.com/in/WylieBlanchard)
- Twitter: [@WylieBlanchard1](https://twitter.com/WylieBlanchard1)

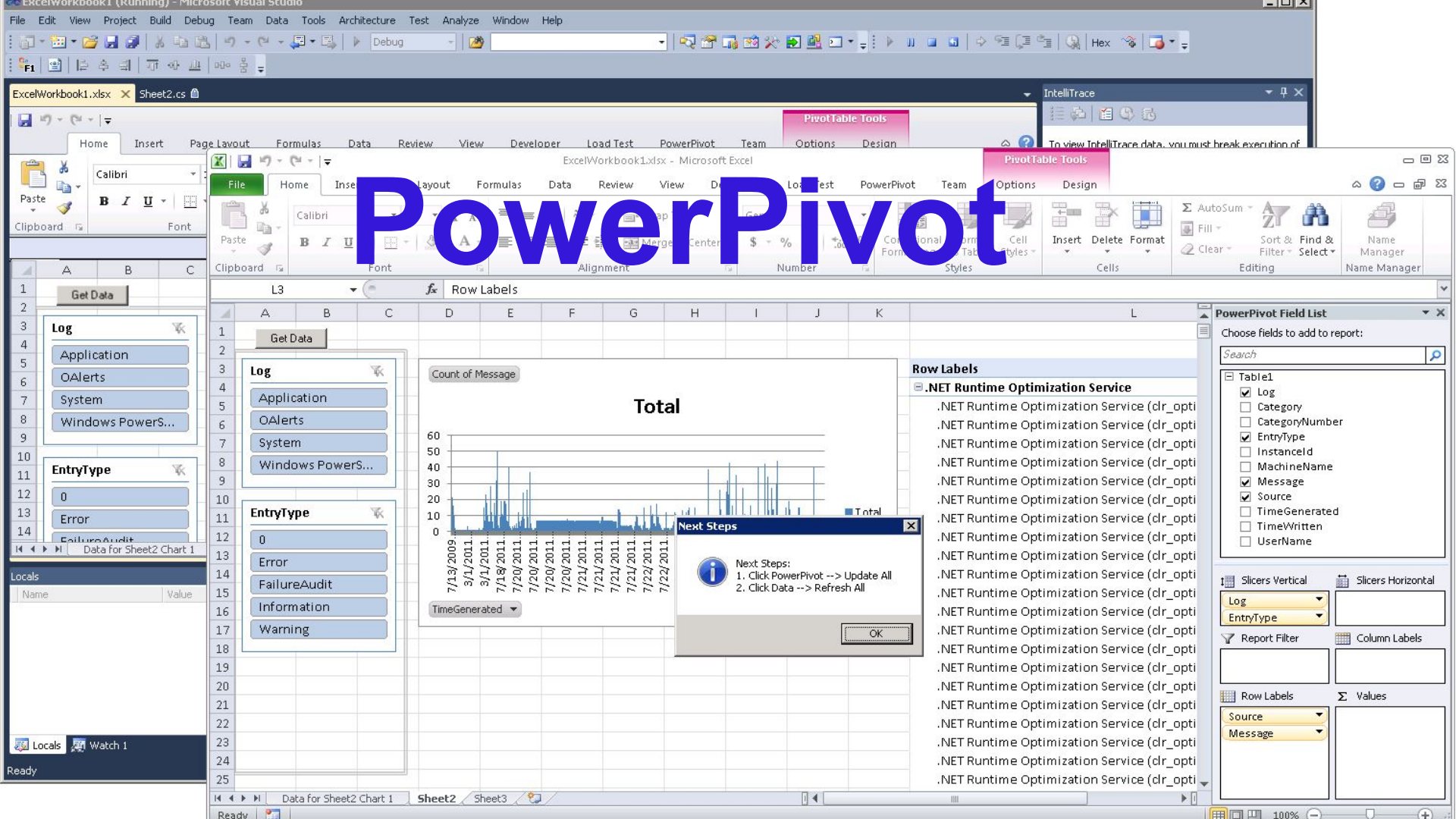


- Pizza Connoisseur (self proclaimed)

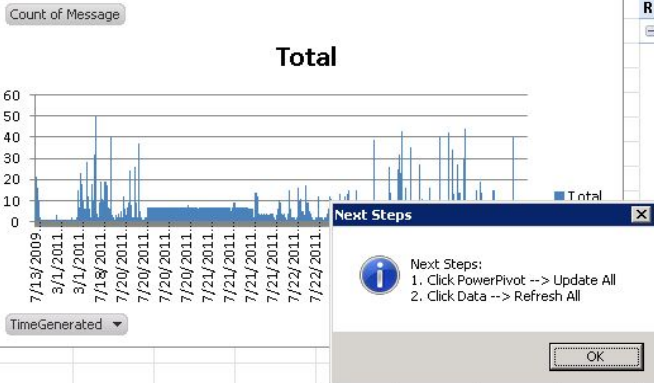
Presentation Summary

Your end users want to analyze data in your data warehouse. They could deal with the learning curve of SSAS but they'd prefer to utilize a familiar application like MS Excel.

Welcome PowerPivot, a tool that retrieves data from your data warehouse by combining the power of SSAS models and your SQL Server Data warehouse within the familiar interface of MS Excel.



PowerPivot



PowerPivot Field List

Choose fields to add to report:

Search

Table1

- Log
- Category
- CategoryNumber
- EntryType
- InstanceId
- MachineName
- Message
- Source
- TimeGenerated
- TimeWritten
- UserName

Slicers Vertical Slicers Horizontal

Log EntryType

Report Filter Column Labels

Row Labels Values

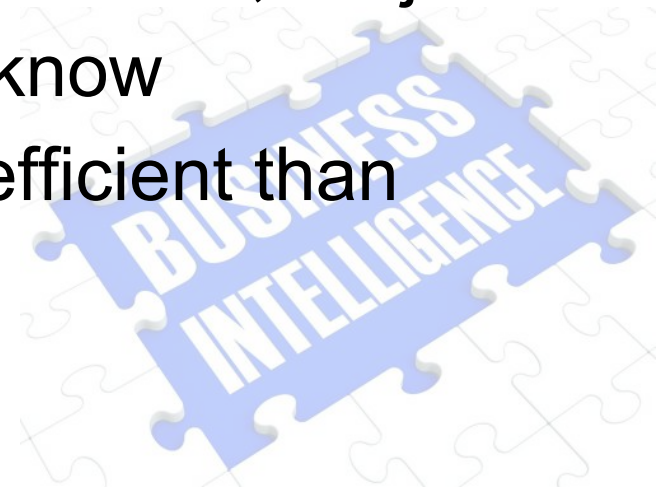
Source Message

What is PowerPivot

- Extends MS Excel Data Models
- Allows users to conduct powerful business intelligence (BI) analysis with a familiar tool
 - Quickly import millions of rows
 - Create relationships between different data sources
 - Use DAX (Data Analysis Expressions) language to create calculated fields (similar to excel formulas)

Why Use PowerPivot for Excel

- Self Service Business Intelligence tool for experienced MS Excel professionals
- PowerPivot is NOT new to excel users, it's just an extension of what you already know
- Table Relationships are more efficient than VLOOKUP



Faster, Bigger, Smaller

- Calculates formulas faster than excel spreadsheet
- Import large data sets without “row import limitations”
- Enhance compression for smaller file sizes

Brief History - PowerPivot

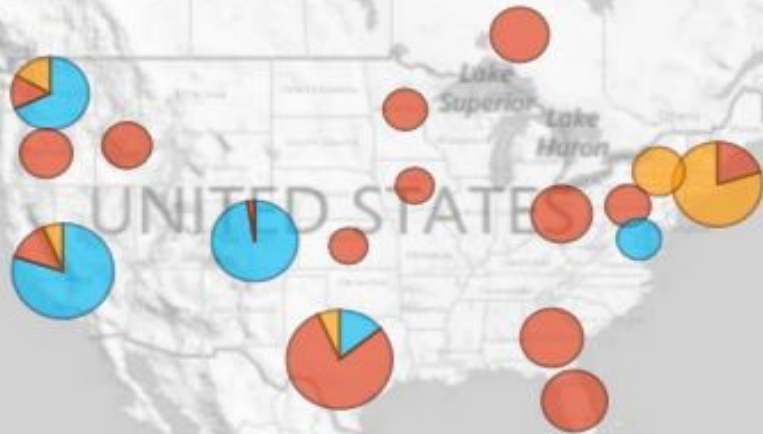
- 2006 Amir Net introduced a BI “sandbox” concept that allows BI applications to be created easily
 - Originally intended for MS Access, not Excel
 - Conceived to utilize in-memory for fast processing
- 2010 Microsoft released **PowerPivot for Excel** and **PowerPivot for SharePoint** with the release of Microsoft SQL Server 2008 R2

Power Pivot's Growth

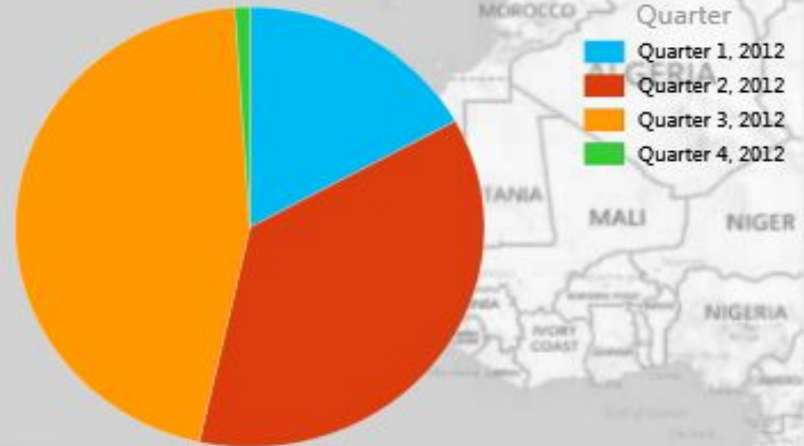
- Microsoft renamed PowerPivot as "Power Pivot"
 - (note the spacing in the name)
- In Excel 2010 & 2013, it is available as an Add-In
- In Excel 2016, it is included natively in the application in the data tab on the ribbon



Power View



Customer due by quarter



Explore, Visualize & Present your data

- Power View Enhances how you view data
 - Interactive dashboards
 - Connect to different data models in one workbook
- New Visualization options
 - Maps
 - Key Performance Indicators
 - Use of Hierarchies

Demo

- Use a BI Semantic Model Connection in Excel
- Analyze Data & Present Data with PowerPivot & Power View



Resources / Recommended Reading

- [Power Pivot: Powerful data analysis and data modeling in Excel](#)
- [Use a BI Semantic Model Connection in Excel or Reporting Services](#)
- [Get data from Analysis Services](#)
- [PowerPivot for Excel Tutorial Introduction](#)

Thank You

Connect With Us

- Twitter: [@GreatTechPros](#)
- LinkedIn: [/company/Great-Tech-Pros](#)
- Google+: [+GreatTechPros](#)

Share your Feedback

www.GreatTechPros.com/feedback

or

www.WylieBlanchard.com/feedback